



## REGISTRATION OF NEW ENGINES, KIT ENGINES AND/OR ALTERNATIVE PARTS FOR A REGISTERED ENGINE

<i>Registration of</i>	Engine
<i>Manufacturer</i>	IAME S.p.A – Zingonia (BG) – Italy
<i>Make</i>	IAME
<i>Model</i>	X30 SUPER SHIFTER 175cc
<i>Category</i>	Formula 250 National
<i>Validity</i>	From 01 January 2016
<i>Number of pages</i>	4

*This Registration Form reproduces descriptions, illustrations and dimensions of the engine at the moment of registration. This document may be supplemented by official amendment. This document must be read in conjunction with the appropriate Class Regulations.*

	
Photo of drive side of engine	Photo of opposite side of engine

### SIGNATURE AND STAMP OF THE MSA

	Date: <b>20 July 2015</b> Signed by: <b>Joe Hickerton</b> Position: <b>MSA Technical Administrator</b>
---	--

*Any reproduction must be authorised by the MSA*

## TECHNICAL INFORMATION

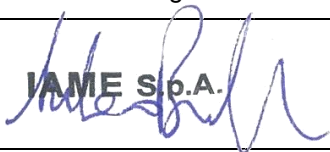
Cylinder Volume	175.5 cm <sup>3</sup>	Cylinder Wall Material	Cast Iron
Bore	63.92 mm	Theoretical Max. Bore	64.04 mm
Stroke	54.40 mm	Length between the centres of the connecting rod	115 mm
Number of Exhaust Ports / Number of Exhaust Ducts	3	Number of Transfer Ducts in the Cylinder	5
Induction System	Reed valve		
Other Characteristics			
Details of alternative part(s) (if applicable)			
	Registered engine:		

## DECLARATION & CONTACT DETAILS

We, the undersigned, confirm that:

1. The information given in this registration is correct and conforms in all respects to relevant MSA Regulations and that all details conform to the appropriate Class regulations.
2. The registered engine and/or alternative parts will be freely available to prospective purchasers within 6 weeks of placing a firm order and will be sold within the prevailing price limit for the class where appropriate.
3. Manufacturers parts lists or equivalent data has been provided with this registration. The parts list information will be kept updated in line with manufacturers updates.

Note: Failure to comply with any of the above requirements may result in Registration cancellation.

NAME OF COMPANY/BUSINESS	IAME S.p.A.
ADDRESS	Via Lisbona, 15 24040 Zingonia (BG) – ITALY
NAME OF SIGNATORY	Andrea Bossaglia
SIGNATURE	 IAME S.p.A.
DATE	20/07/2015

**PHOTOS OF COMPLETE ENGINE**  
**TO SHOW REGISTERED ALTERNATIVE PARTS WHERE APPLICABLE**



Photo of left-hand centre crankcase



Photo of right-hand centre crankcase



Photo of left-hand side of cylinder



Photo of right-hand side of cylinder



Photo of cylinder head



Photo of crankshaft

N/A

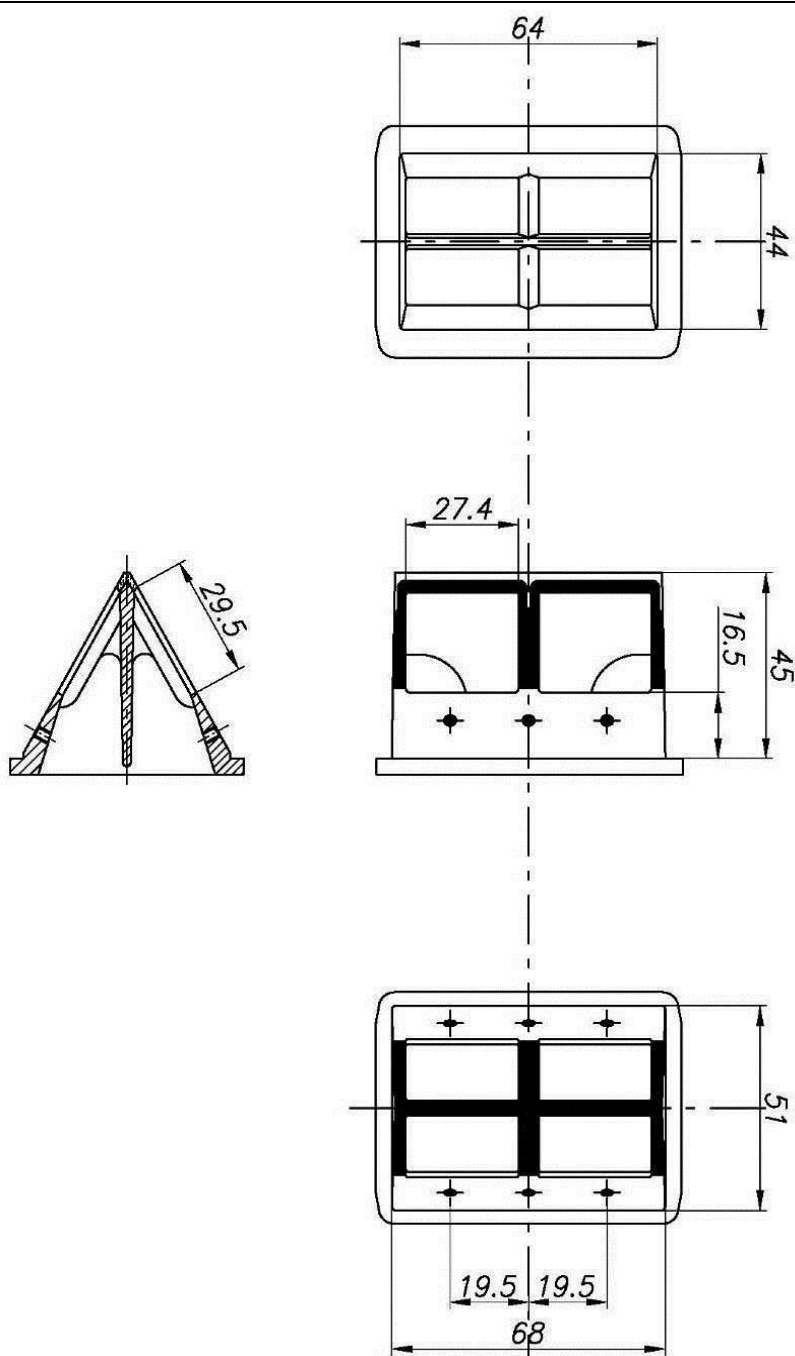
Photo of balance shaft

## REGISTRATION OF NEW ENGINES

### SUPPLEMENT FOR ENGINES UP TO 179cc

<i>Manufacturer</i>	IAME S.p.A – Zingonia (BG) – Italy
<i>Make</i>	IAME
<i>Model</i>	X30 SUPER SHIFTER 175cc
<i>Number of pages</i>	5

## REED VALVE

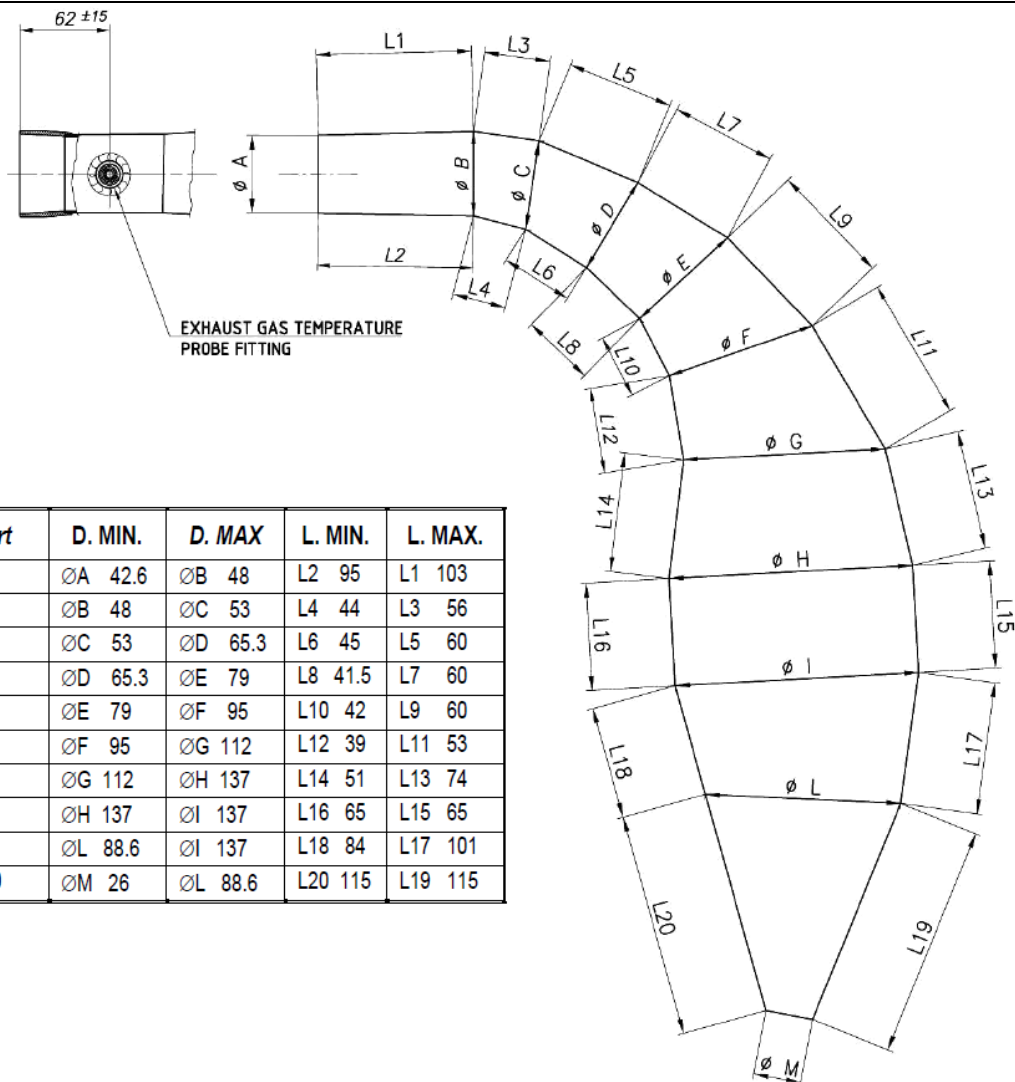


Drawing of reed valve with dimensions

## EXHAUST



Photo of exhaust

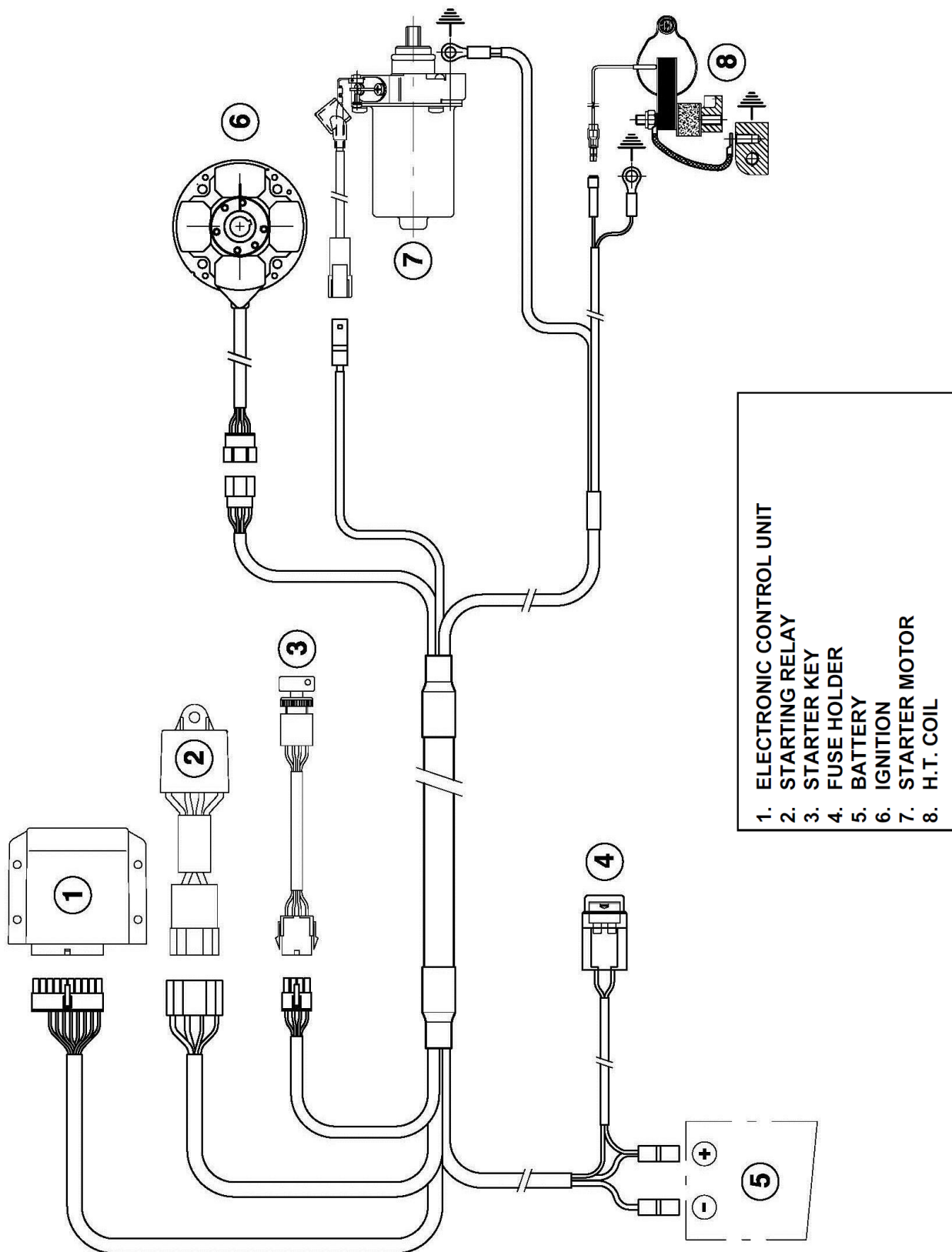


Drawing of exhaust with dimensions



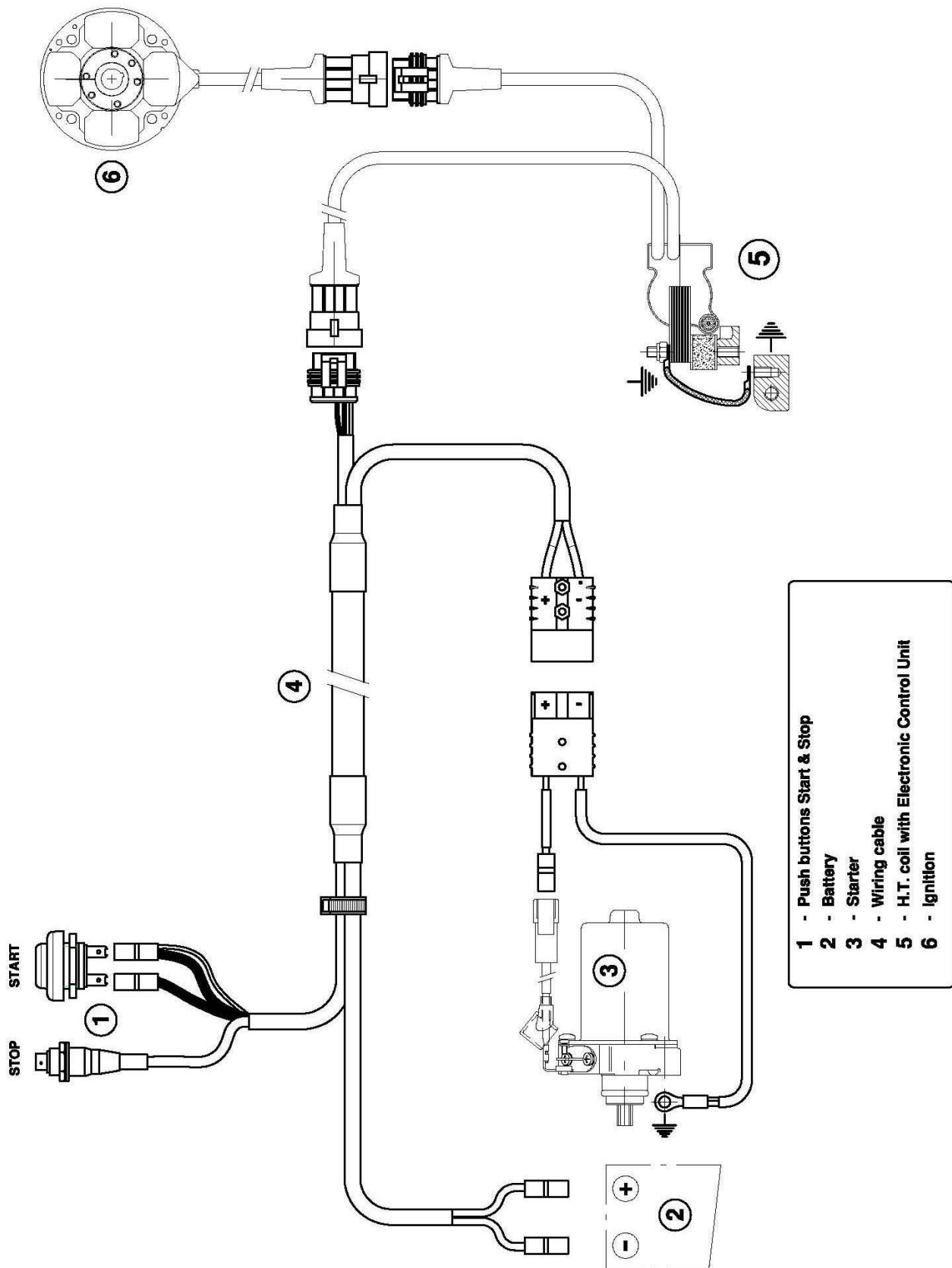
## IGNITION

### OPTION 1 – SELETTRA DIGITAL “K” IGNITION



Wiring diagram

### OPTION 2 – SELETTRA DIGITAL “S” IGNITION

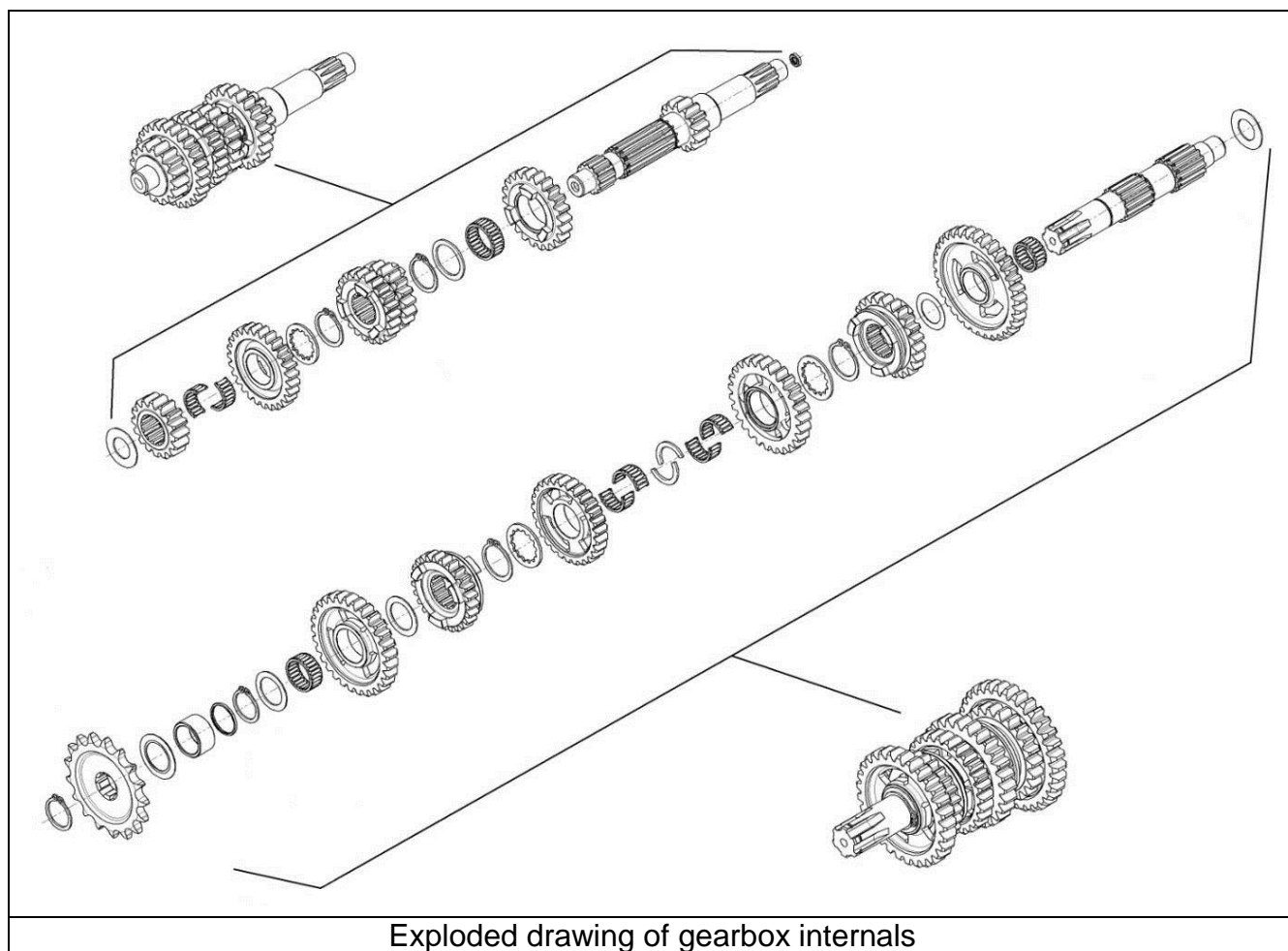


Wiring diagram



## GEARBOX

Primary coupling: 19 / 75			
Gearbox ratios:			
Gear	Primary shaft	Secondary shaft	Value after 3 engine revs
1 <sup>st</sup>	13	33	107.78°
2 <sup>nd</sup>	16	29	150.95°
3 <sup>rd</sup>	18	27	182.40°
4 <sup>th</sup>	22	27	222.93°
5 <sup>th</sup>	22	23	261.70°
6 <sup>th</sup>	27	25	295.49°



Exploded drawing of gearbox internals

### SIGNATURE AND STAMP OF THE MSA

A handwritten signature in blue ink, followed by the MSA logo which consists of the letters 'MSA' in a bold, sans-serif font with a stylized red and blue graphic element above the 'A'.

Date: **03 August 2015**Signed by: **Joe Hickerton**Position: **MSA Technical Administrator**